



# NOAA EXTREME WEATHER 2008 INFORMATION SHEET

<http://ecowatch.ncddc.noaa.gov/c-side>

## STATE INFORMATION

Louisiana Office of Homeland Security and Preparedness	1-800-256-7036 or 225-925-7500
	<a href="http://www.ohsep.louisiana.gov">www.ohsep.louisiana.gov</a>
Louisiana Department of Transportation ( <a href="http://www.dotd.state.la.us">www.dotd.state.la.us</a> )	225-379-1100
National Weather Service Forecast Office (New Orleans/Baton Rouge) ( <a href="http://www.srh.noaa.gov/lix">www.srh.noaa.gov/lix</a> )	504-522-7330
National Weather Service Forecast Office (Lake Charles) ( <a href="http://www.srh.noaa.gov/lch">www.srh.noaa.gov/lch</a> )	337-477-5285
Louisiana State University Hurricane Center ( <a href="http://hurricane.lsu.edu">hurricane.lsu.edu</a> )	225-578-4813
Louisiana Office of Tourism	<a href="http://www.louisianatravel.com">www.louisianatravel.com</a>
Louisiana State Police ( <a href="http://www.lsp.org">www.lsp.org</a> )	225-925-6325 (*LSP from any cell phone)
Louisiana State Police Road Closure Hotline	1-800-469-4828
Louisiana Governor's Office ( <a href="http://www.gov.state.la.us">www.gov.state.la.us</a> )	1-866-366-1121
Louisiana Attorney General ( <a href="http://www.ag.state.la.us">www.ag.state.la.us</a> )	225-326-6705
Louisiana Department of Agriculture & Forestry ( <a href="http://www.ldaf.state.la.us">www.ldaf.state.la.us</a> )	225-922-1234
Louisiana Department of Environmental Quality ( <a href="http://www.deq.louisiana.gov">www.deq.louisiana.gov</a> )	1-866-896-LDEQ (5337)
Louisiana Department of Insurance ( <a href="http://www.lidi.la.gov">www.lidi.la.gov</a> )	1-800-259-5300 or 225-342-5900
Louisiana Department of Wildlife & Fisheries ( <a href="http://www.wlf.louisiana.gov">www.wlf.louisiana.gov</a> )	225-765-2800
Louisiana Department of Natural Resources ( <a href="http://www.dnr.louisiana.gov">www.dnr.louisiana.gov</a> )	225-342-4500
Louisiana Department of Health and Hospitals ( <a href="http://www.dhh.state.la.us">www.dhh.state.la.us</a> )	225-342-9500
Louisiana Department of Social Services ( <a href="http://www.dss.state.la.us">www.dss.state.la.us</a> )	1-888-524-3578 or 225-342-0286
Louisiana Department of Labor ( <a href="http://www.laworks.net">www.laworks.net</a> )	1-866-783-5567
US Coast Guard (8th District)	504-846-6160
Cleco Corporation ( <a href="http://www.cleco.com">www.cleco.com</a> )	1-800-622-6537
Entergy ( <a href="http://www.entergy-louisiana.com">www.entergy-louisiana.com</a> )	1-800-ENTERGY (368-3749)
	Power outages: 1-800-9OUTAGE (968-8243)
Washington St. Tammany Electric Cooperative ( <a href="http://www.wste.coop">www.wste.coop</a> )	985-643-6612
	Power outages: 1-866-672-9773

• FOR EMERGENCIES, CALL 911 IN ALL AREAS •  
 • FOR NON-EMERGENCY INFORMATION AND REFERRALS, CALL 211 •

## PARISH INFORMATION

### ST. TAMMANY

Emergency Management ..... 985-898-2359  
 Sheriff Department ..... 985-898-2338

### ORLEANS

Emergency Management ..... 504-658-8700  
 Sheriff Department ..... 504-827-8505

### ST. BERNARD

Emergency Management ..... 504-278-4267  
 Sheriff Department ..... 504-271-2501

### PLAQUEMINES

Emergency Management ..... 504-297-5671  
 Sheriff Department ..... 504-564-2525

### JEFFERSON

Emergency Management ..... 504-349-5360  
 Sheriff Department ..... 504-349-5322

### ST. CHARLES

Emergency Management ..... 985-783-5050  
 Sheriff Department ..... 985-783-6807

### LAFOURCHE

Emergency Management ..... 985-537-7603  
 Sheriff Department ..... 985-532-2808

### TERREBONNE

Emergency Management ..... 985-873-6357  
 Sheriff Department ..... 985-876-2500

### ASSUMPTION

Emergency Management ..... 985-369-7386  
 Sheriff Department ..... 985-369-2912

### ST. MARTIN

Emergency Management ..... 337-394-3071  
 Sheriff Department ..... 337-394-3071

### ST. MARY

Emergency Management ..... 985-385-2600  
 Sheriff Department ..... 337-828-1960

### IBERIA

Emergency Management ..... 337-369-4427  
 Sheriff Department ..... 337-369-3711

### CALCASIEU

Emergency Management ..... 337-721-3800  
 Sheriff Department ..... 337-491-3600

### JEFFERSON DAVIS

Emergency Management ..... 337-821-2100  
 Sheriff Department ..... 337-821-2100

### LAFAYETTE

Emergency Management ..... 337-291-5075  
 Sheriff Department ..... 337-232-9211

### ACADIA

Emergency Management ..... 337-783-4357  
 Sheriff Department ..... 337-788-8700

### VERMILION

Emergency Management ..... 337-898-4308  
 Sheriff Department ..... 337-893-0871

### CAMERON

Emergency Management ..... 337-775-7048  
 Sheriff Department ..... 337-775-5111

A  
 Z  
 A  
 I  
 S  
 I  
 D  
 O  
 L

## NATIONAL INFORMATION

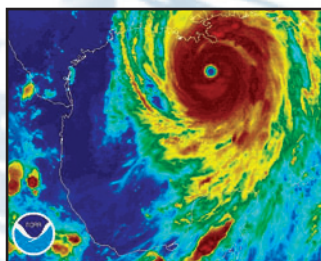
**American Red Cross** ..... 1-866-GET-INFO (1-866-438-4636)  
 ..... www.redcross.org  
**Environmental Protection Agency** ..... www.epa.gov  
**Federal Emergency Management Agency (FEMA)**.... 1-800-621-FEMA (3362)  
 ..... www.fema.gov  
**National Oceanic and Atmospheric Administration (NOAA)**  
 ..... www.noaa.gov  
**NOAA National Coastal Data Development Center** ..... www.ncddc.noaa.gov  
**NOAA National Climatic Data Center** ..... www.ncdc.noaa.gov  
**NOAA National Data Buoy Center** ..... www.ndbc.noaa.gov  
**NOAA National Hurricane Center** ..... www.nhc.noaa.gov  
**NOAA National Oceanographic Data Center** ..... www.nodc.noaa.gov  
**NOAA National Weather Service** ..... www.nws.noaa.gov  
**NOAA Coastal Services Center** ..... www.csc.noaa.gov  
**NOAA National Environmental Satellite, Data, and Information**  
 ..... www.nesdis.noaa.gov  
**NOAAWatch - NOAA's All-Hazard Monitor** ..... www.noaawatch.gov  
**US Department of Homeland Security** ..... www.dhs.gov  
**U.S. Department of Commerce** ..... www.commerce.gov  
**National Aeronautics and Space Administration (NASA)** ..... www.nasa.gov  
**EPA Gulf of Mexico Program** ..... www.epa.gov/gmpo  
**Commander Naval Meteorology and Oceanography Command**  
 ..... www.oceanographer.navy.mil/cnmoc.htm

**For additional resources, updates, and real-time data see our website: <http://ecowatch.ncddc.noaa.gov/c-side>**



The site provides direct linkage to local, state, and federal information as it pertains to severe weather preparation and monitoring across the Gulf of Mexico coastal region.

**NOAA Satellites and Information Service (National Environmental Satellite, Data and Information Service) - NESDIS** operates the satellites and manages the processing and distribution of millions of bits of data and images these satellites produce daily. The prime customer for the satellite data is the NOAA National Weather Service, which uses satellite data to create forecasts for television, radio, and weather advisory services.



## RADIO STATIONS

### Louisiana:

WWL 870 AM (New Orleans)	WLMG 101.9 FM (New Orleans)
WFMF 102.5 FM (Baton Rouge)	KHLA 99.5 FM (Lake Charles)
WJBO 1150 AM (Baton Rouge)	KTDY 99.9 FM (Lafayette)

### Mississippi:

MS Public Broadcasting 88.1 - 91.3 FM	WXRR 104.5 FM (Hattiesburg)
WKNN 99.1 FM (Pascagoula)	WRJW 1320 AM (Picayune)
WZKX 107.9 FM (Gulfport)	WQRZ 103.5 FM (Kiln)

### Alabama:

WABB 97.5 FM (Mobile)	WOOF 99.7 FM (Dothan)
WMXC 99.9 FM (Mobile)	WOPP 1290 AM (Opp)
WCSN 105.7 FM (Orange Beach)	WKMX 106.7 FM (Enterprise)

## NOAA Weather Radio

*Not manufactured by NOAA, NWR receivers can be purchased at many retail outlets and on the Internet*

NOAA Weather Radio (NWR) All Hazards is a nationwide network of radio stations broadcasting continuous weather information directly from a nearby National Weather Service office. NWR broadcasts National Weather Service warnings, watches, forecasts, and other hazard information 24 hours a day.

162.400 MHz	162.425 MHz	162.450 MHz	162.475 MHz	162.500 MHz	162.525 MHz	162.550 MHz
-------------	-------------	-------------	-------------	-------------	-------------	-------------



**Louisiana 511 Traveler Information**

Louisiana 511 Traveler Information is a free service of the Louisiana Department of Transportation and Development. Travelers can dial **511** or visit [www.511la.org](http://www.511la.org) for around-the-clock, real-time traffic updates as well as information about construction activities and weather-related road conditions simply by saying the route or region about which they are seeking information. The regions are: North West, North East, Central, South West, North Shore, South Central, and South East. In case of evacuation, information will be available through 511 on such important topics as contraflow status.

Residents without access to 511, or anyone calling from outside of the state of Louisiana, can access the 511 Traveler Information Service by calling **888-ROAD-511 (888-762-3511)**.

**For more information, visit the Louisiana 511 Traveler Information website at [www.511la.org](http://www.511la.org).**

**Louisiana Department of Transportation and Development [www.dotd.louisiana.gov](http://www.dotd.louisiana.gov)**

## Participants



**Prepared by NCDDC 1-866-732-2382  
 Email: [NCDDC@NOAA.GOV](mailto:NCDDC@NOAA.GOV)**

Version 1.05

Published March 2008